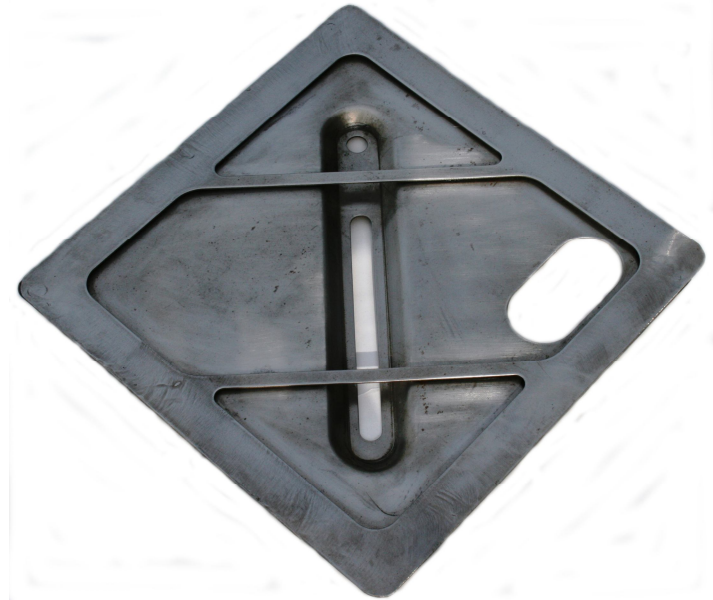


Features:

- Meets AAR / FRA Specifications and Requirements
- Durable 14 Gauge Steel
- Universal Mounting Configuration
- Easy "Slide In / Slide Out" Design
- Precision Stampings

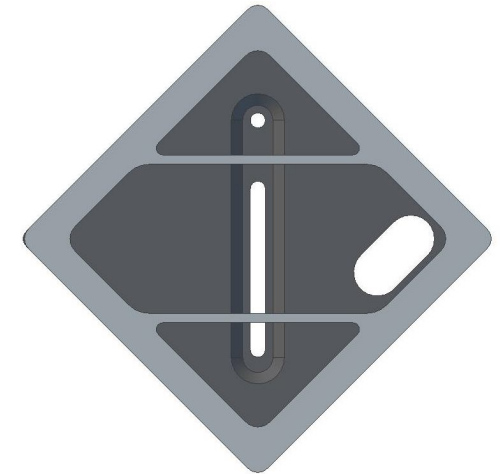


Benefits:

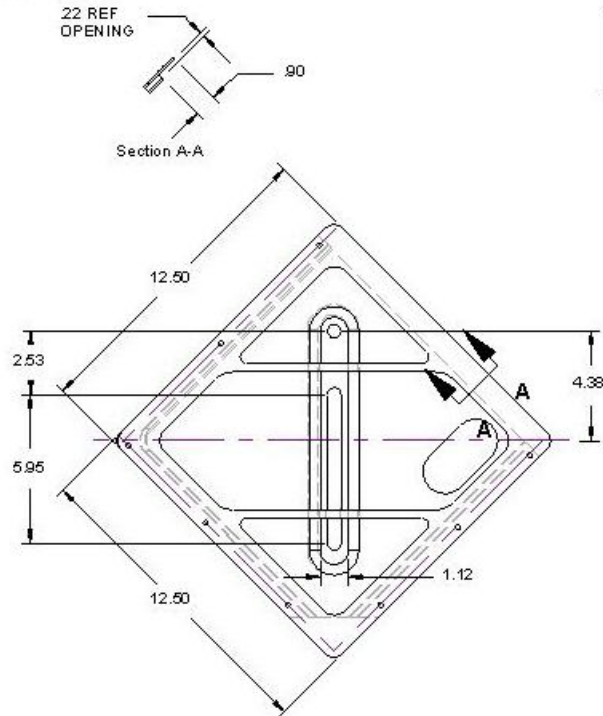
- Low Cost
- Short Lead Times
- Less Susceptible to Field Damage
- Accurate Fit
- Ease of Insertion and Removal of Placards

Design & QC:

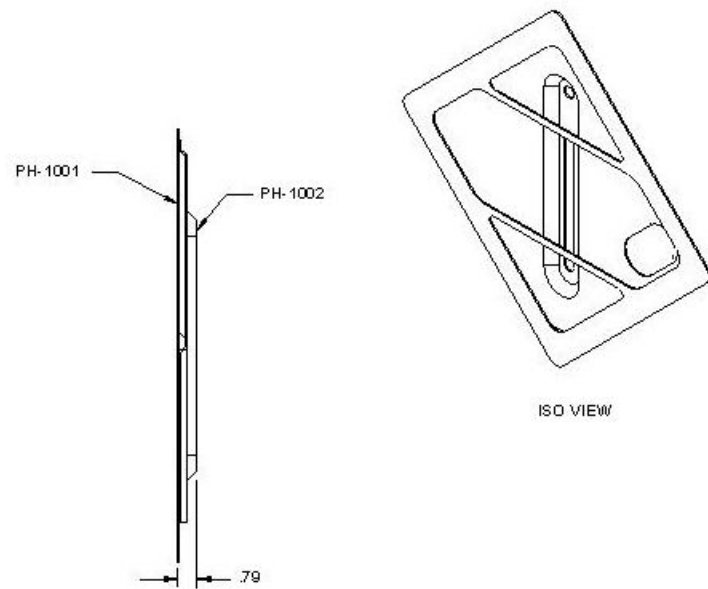
- Computer Aided Design
- 3D Modeled for Accuracy in Detail
- Quality Control held to Specific Design Criteria that Meets or Exceeds AAR and Standards Minimums



This document contains proprietary and confidential information of Ring Industries Incorporated. No disclosure, reproduction, or use may be made without written permission from Ring Industries Incorporated.



REVISIONS				
ZONE	REV	DESCRIPTION	DATE	APPROVED



ALL DIMENSIONS FOR REFERENCE AND CAR MOUNTING PURPOSES ONLY.

ALL DIMENSIONS ARE INCHES UNLESS OTHERWISE SPECIFIED
DO NOT SCALE PRINT
DO NOT REVISE PRINT MANUALLY

UNLESS SHOWN: X = XX = XXX = ANGULAR = DRAFT = FINISH = RADII =	DRAWN	DATE 4/7/12	PHONE: (219) 204-1577 EMAIL: RII@RINGENGINEERING.COM	
	CHECKED	PART WT.: 4.25 LBS	PLACARD HOLDER ASSEMBLY	
	Q.A.			
MATERIAL: STEEL	APPROVED	SIZE A	DWG NO. PH-1004	REV
HEAT TREAT:		SCALE		SHEET